



108 Tulloch Terrace, Perth, PH1 2PS
Offers over £145,000



108 Tulloch Terrace Perth, PH1 2PS

- First-floor apartment
- Traditional stone-built terrace
- Bright and spacious lounge
- Well-appointed bathroom
- Private rear garden with patio
- Private entrance via external staircase
- Three generous bedrooms
- Fitted kitchen with ample storage
- Excellent storage throughout
- Convenient Perth location

Situated within a traditional stone-built terrace in a popular area of Perth, this generously proportioned first-floor apartment offers spacious accommodation throughout and is ideally suited to first-time buyers, professionals, families or investors.

Accessed via an external stone staircase leading to a private front entrance, the property enjoys a bright and airy feel throughout. The welcoming hallway provides access to all principal rooms and benefits from useful storage. The accommodation includes a spacious lounge featuring large windows that flood the room with natural light, creating an excellent space for both relaxing and entertaining. The fitted kitchen offers a good range of wall and base units, generous worktop space and ample room for everyday cooking and dining. There are three well-proportioned bedrooms, all offering flexible accommodation for family living, guest rooms or home-working space. The principal bedroom is particularly generous in size, while the additional bedrooms provide excellent versatility. A well-appointed bathroom completes the internal accommodation. Externally, the property benefits from access to private outdoor space, including a substantial rear garden featuring a paved patio area and lawn, ideal for outdoor dining, gardening or enjoying the warmer months. Residents also benefit from private grounds and off-street parking with space for up to 2 vehicles. Combining traditional character, generous room proportions and a convenient location close to Perth city centre, schools, transport links and local amenities, this attractive apartment represents an excellent opportunity for a wide range of purchasers.

Offers over £145,000



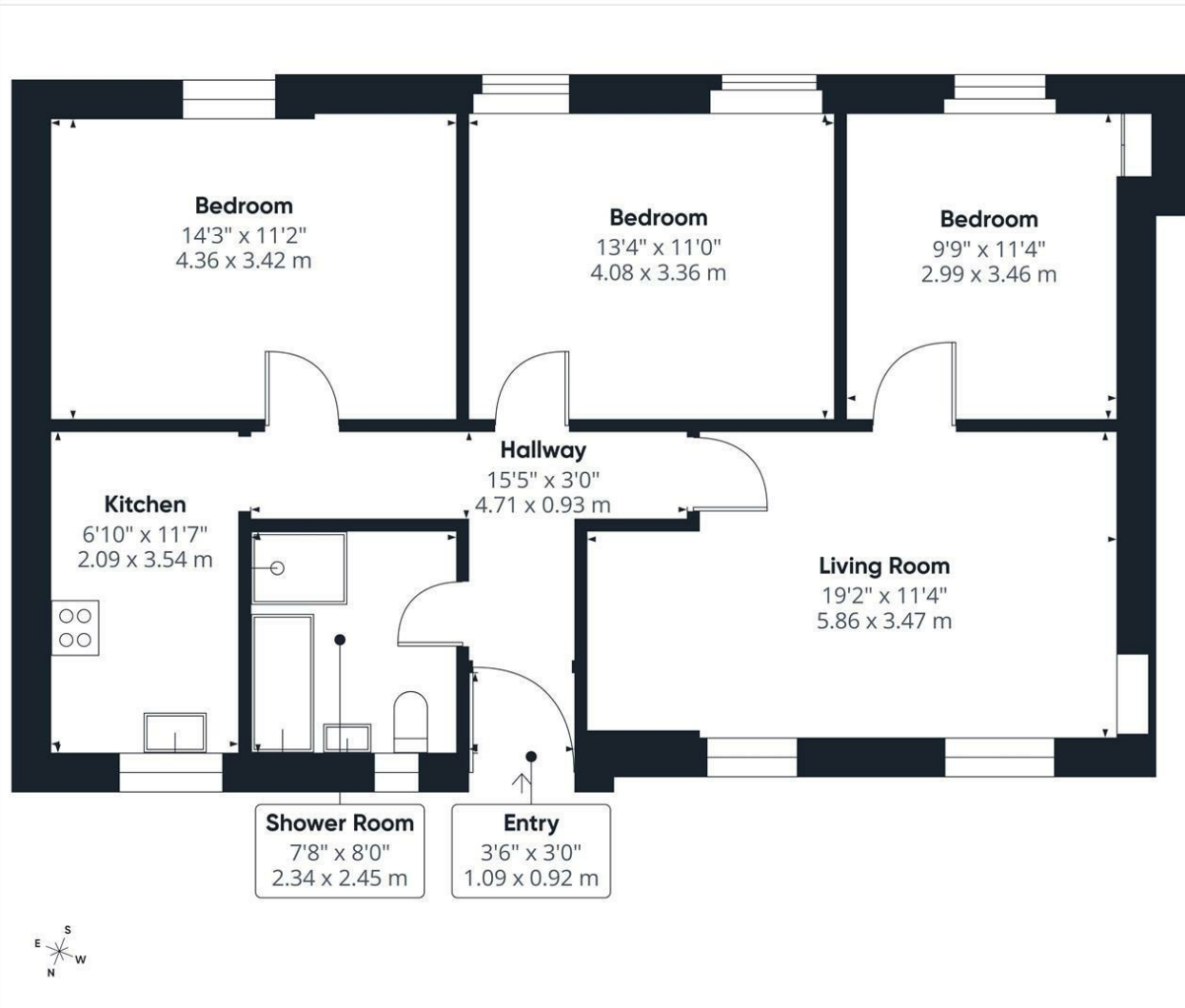


Location

Tulloch Terrace is a well-established residential address located within easy reach of Perth city centre. Residents benefit from excellent access to a wide range of amenities including supermarkets, cafés, restaurants, leisure facilities and independent retailers. The area is well served by public transport and offers convenient road connections to Dundee, Edinburgh, Glasgow and Inverness. A variety of primary and secondary schools are available nearby, making the location appealing to families. Perth's attractive parks, riverside walks and recreational facilities are all within easy reach. The area combines city convenience with a strong sense of community and traditional character.





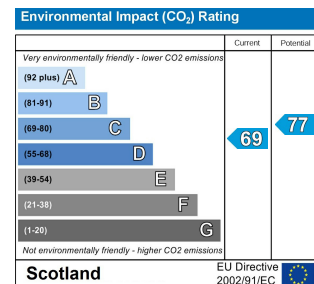
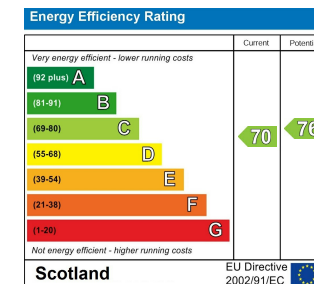
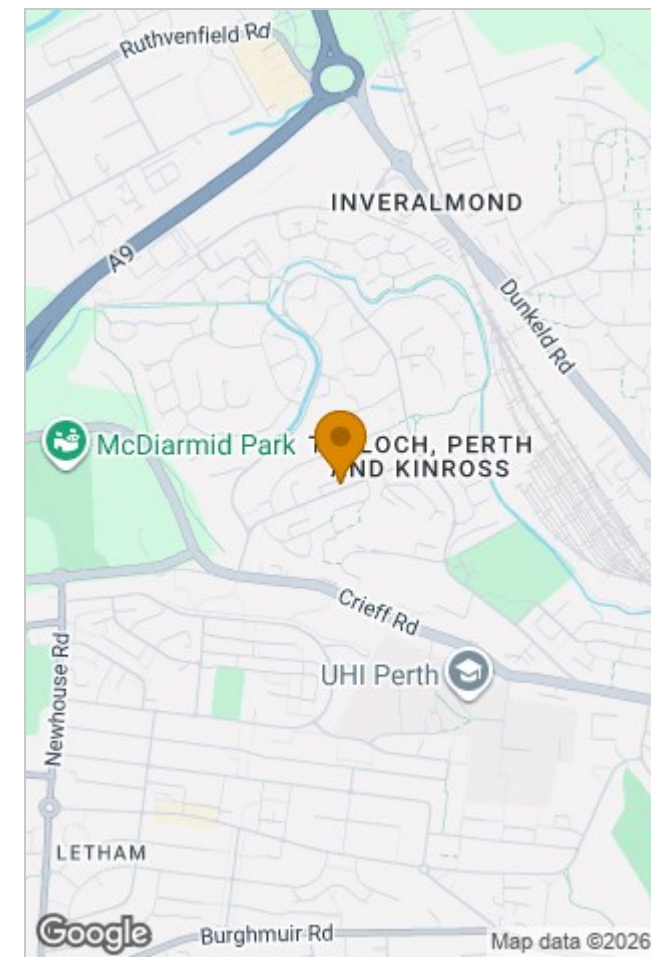


Approximate total area⁽¹⁾
871 ft²
80.9 m²

(1) Excluding balconies and terraces

Calculations reference the RICS IPMS 3C standard. Measurements are approximate and not to scale. This floor plan is intended for illustration only.

GIRAFFE360



Viewing

Please contact our Perth Office on 01738 260 035

if you wish to arrange a viewing appointment for this property or require further information.

The particulars are set out as a general outline only for the guidance of intended purchasers or lessees, and do not constitute, any part of a contract. Nothing in these particulars shall be deemed to be a statement that the property is in good structural condition or otherwise nor that any of the services, appliances, equipment or facilities are in good working order. Purchasers should satisfy themselves of this prior to purchasing.

